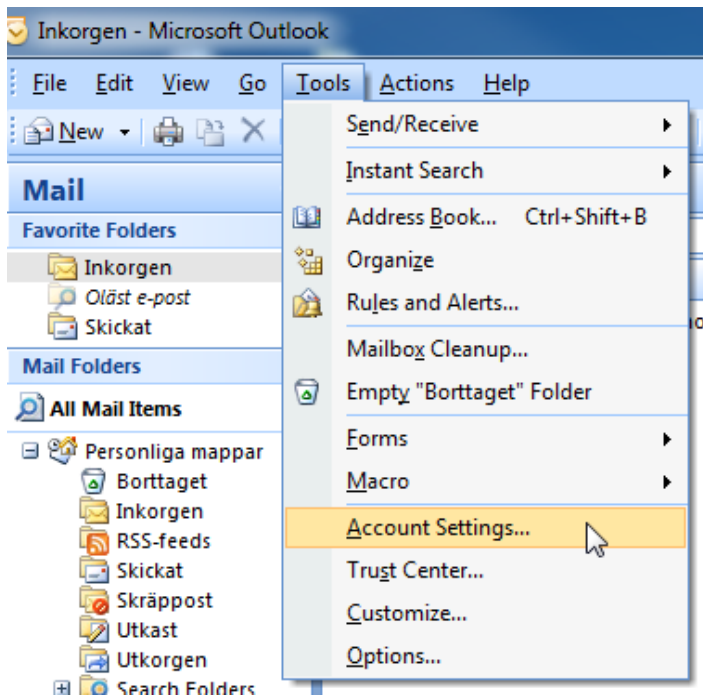
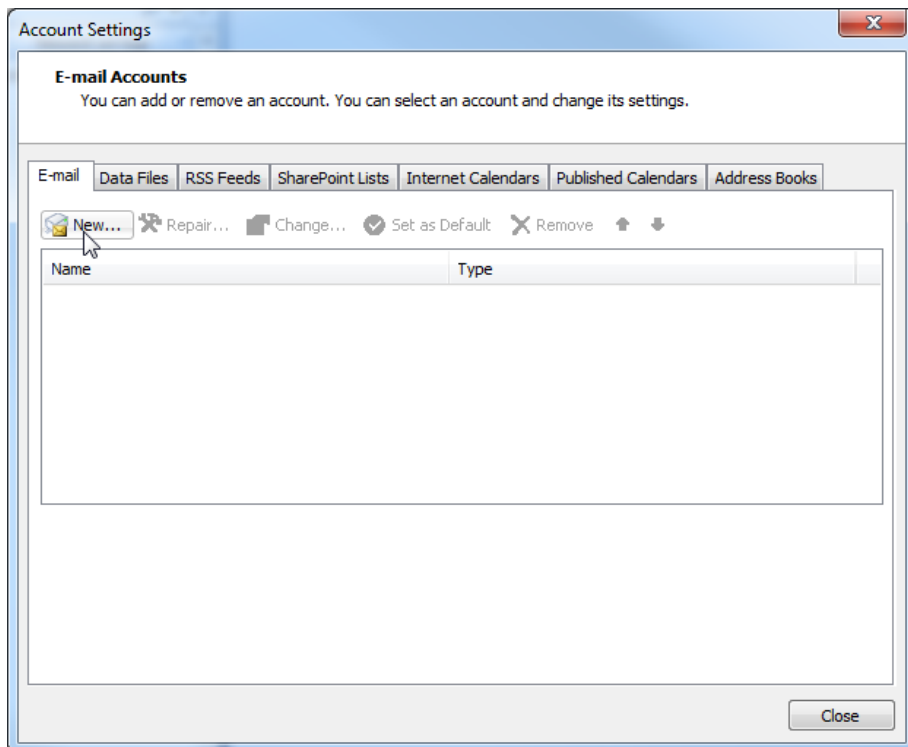


Guide for E-mail in Outlook 2007

1. Open up your outlook, press Tools and choose Account Settings



2. Press the button New



3. On this next step, you will check the checkbox called "Manually configure server settings or additional server types" and press Next

The screenshot shows the 'Add New E-mail Account' dialog box in the 'Auto Account Setup' step. The window title is 'Add New E-mail Account'. The main heading is 'Auto Account Setup'. There are four input fields: 'Your Name:' with an example 'Barbara Sankovic', 'E-mail Address:' with an example 'barbara@contoso.com', 'Password:', and 'Retype Password:' with a note 'Type the password your Internet service provider has given you.'. At the bottom left, the checkbox 'Manually configure server settings or additional server types' is checked. At the bottom right, there are three buttons: '< Back', 'Next >', and 'Cancel'.

4. Make sure to check the option with POP, IMAP in the name and press Next

The screenshot shows the 'Add New E-mail Account' dialog box in the 'Choose E-mail Service' step. The window title is 'Add New E-mail Account'. The main heading is 'Choose E-mail Service'. There are three radio button options: 'Internet E-mail' (selected), 'Microsoft Exchange', and 'Other'. Below 'Other' is a list box containing 'Fax Mail Transport' and 'Outlook Mobile Service (Text Messaging)'. At the bottom right, there are three buttons: '< Back', 'Next >', and 'Cancel'.

5. Now you have to enter the following in order to get the email working, and then press **More settings**

E-mail Address – Enter your E-mailaddress

Account Type – Choose IMAP

Incoming Mail Server – post.intendit.se

Outgoing Mail Server (SMTP) post.intendit.se

Username: - Enter your Emailaddress

Password – Enter your password

Add New E-mail Account

Internet E-mail Settings
Each of these settings are required to get your e-mail account working.

User Information
Your Name: Design Test
E-mail Address: designtest@intenditmail.se

Server Information
Account Type: IMAP
Incoming mail server: post.intendit.se
Outgoing mail server (SMTP): post.intendit.se

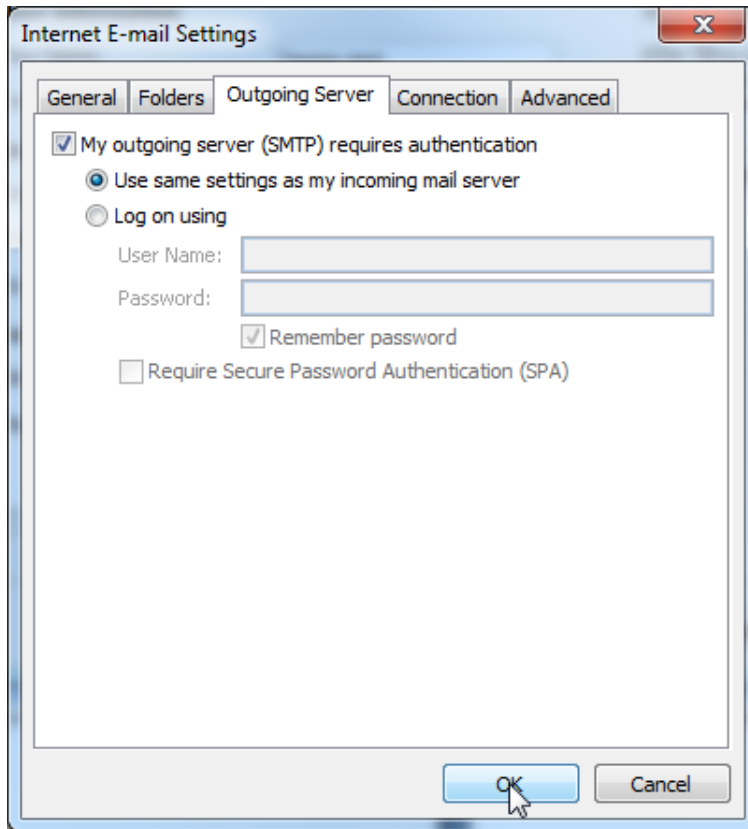
Logon Information
User Name: designtest@intenditmail.se
Password: *****
 Remember password
 Require logon using Secure Password Authentication (SPA)

Test Account Settings
After filling out the information on this screen, we recommend you test your account by clicking the button below. (Requires network connection)
Test Account Settings ...

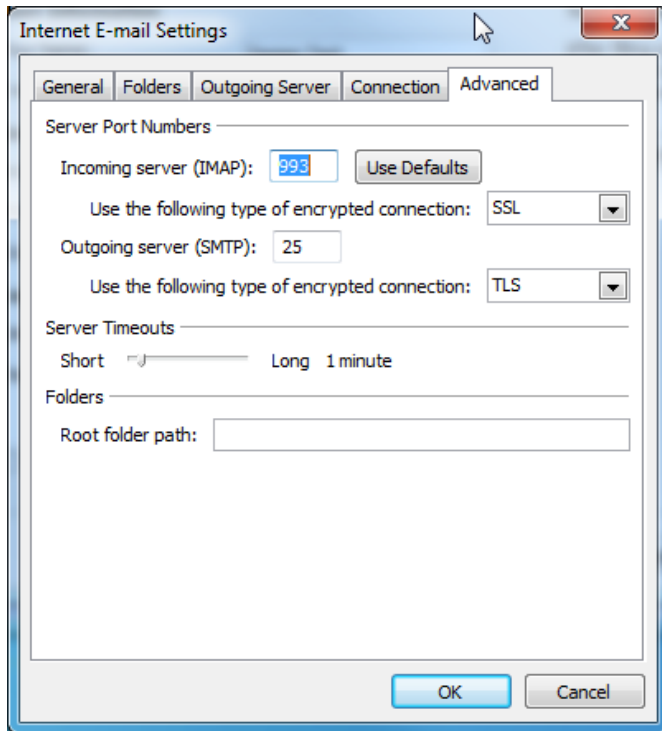
More Settings ...

< Back Next > Cancel

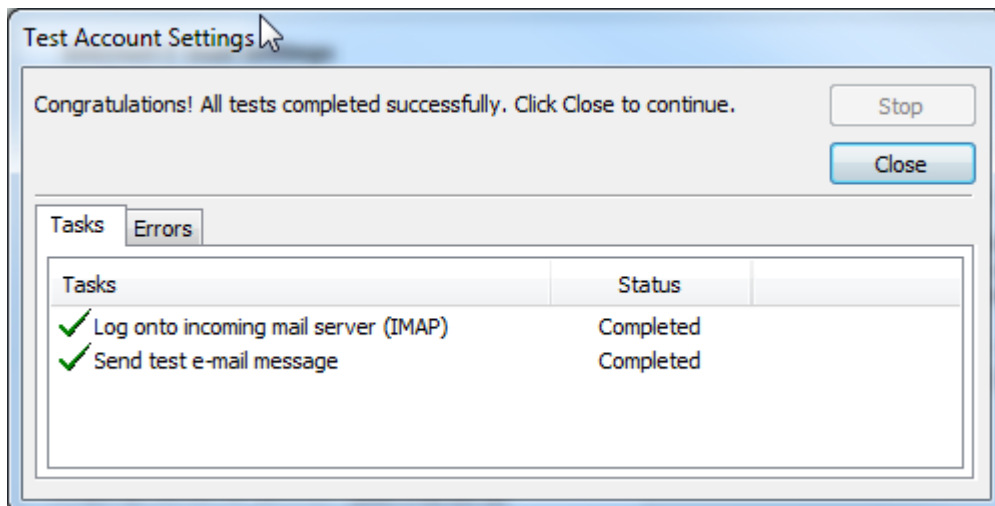
6. After you've pressed "More Settings" go into the tab called "Outgoing Server" Check the checkbox for "My outgoing server (SMTP) requires authentication" and the radio button "Use same settings as my incoming mail server"



- Now go into the tab called "Advanced" and make sure to have the correct ports.
Incoming Server (IMAP) – 993
Encrypted Connection – SSL
Outgoing Server (SMTP) – 25
Encrypt Connection – TLS
Then press OK



- Now make a test connection, and it should look like this.



- And now your email configuration is complete and you can start using it.